

2019

(Dates are Sundays unless otherwise noted)

SEPTEMBER	
15	Schola Cantorum returns
21	Requiem for September Departed (Saturday, 10 am)
29	Saint Michael and All Angels (Stewardship Sunday)
OCTOBER	
5	Holy Rosary (Saturday, 10:30 am)
6	Blue Heron Concert (4 pm)
8	Vestry (Tuesday, 7 pm)
11-13	RISD Family Weekend (Friday-Sunday)
14	Columbus Day (Monday, holiday schedule)
18-20	Brown Family Weekend (Friday-Sunday)
19	Requiem for October Departed (Saturday, 10 am)
NOVEMBER	
1	All Saints Day - Low Mass (Friday, 12:10 pm)
2	All Souls Day - Low Requiem Mass (Saturday, 10 am) Holy Rosary (Saturday, 10:30 am)
3	Sunday after All Saints (Daylight Saving Time ends)
10	Remembrance Sunday Solemn Requiem Mass (10 am)

11	Veterans Day (Monday, holiday schedule)
12	Vestry (Tuesday, 7 pm)
16	Requiem for November Departed (Saturday, 10 am)
24	Christ the King
28	Thanksgiving Day (Thursday, holiday schedule)
DECEMBER	
1	Advent Lessons and Carols (5:30 pm)
7	Holy Rosary (Saturday, 10:30 am)
10	Vestry (Tuesday, 7 pm)
21	Mass with Commemoration of December Departed (Saturday, 10 am)
24	Christmas Eve Family Mass (Tuesday, 5:30 pm) Solemn Mass of the Nativity (Tuesday, 10:30 pm)
25	Christmas Day (Wednesday, Low Mass at 10 am)
30	Saint Stephen, Deacon and Protomartyr Low Mass (Monday, 10 am)

2020

JANUARY	
1	Feast of the Holy Name Low Mass (Wednesday, 10 am)
	New Year’s Day Dinner for the Hungry (Wednesday, 12 noon)
4	Holy Rosary (Saturday, 10:30 am)

5	Feast of the Epiphany (anticipated)
12	Feast of the Baptism of Christ
14	Vestry (Tuesday, 7 pm)
18	Requiem for January Departed (Saturday, 10 am)
20	Birthday of Martin Luther King, Jr. observed (Monday, holiday schedule)
22	Brown Spring Semester begins (Wednesday)
FEBRUARY	
1	Holy Rosary (Saturday, 10:30 am)
2	Feast of the Presentation Annual Parish Meeting (following 10 am Mass)
15	Requiem for February Departed (Saturday, 10 am)
17	Presidents’ Day observed (Monday, holiday schedule)
25	Shrove Tuesday Pancake Supper 5-7 pm
26	Ash Wednesday – Solemn Mass, 7 pm

MARCH	
7	Holy Rosary (Saturday, 10:30 am)
8	(Daylight Saving Time begins)
10	Vestry (Tuesday, 7 pm)
21	Mass with Commemoration of March Departed (Saturday, 10 am)
25	Feast of the Annunciation (Wednesday, Low Mass at 6 pm)
29	Brown Spring Recess ends

LENT 2020

Ecumenical Stations of the Cross
With the Episcopal Ministry at Brown and RISD (EMBR)
and the Brown-RISD Catholic Community (BRCC)
Fridays at 6 pm

Sorrowful Mysteries of the Rosary
Saturdays at 10:30 am

APRIL	
4	Holy Rosary (Saturday, 10:30 am)
9	Vestry (Tuesday, 7 pm)
18	Mass with Commemoration of April Departed (Saturday, 10 am)
MAY	
2	Holy Rosary (Saturday, 10:30 am)
10	May Procession of Our Lady (10 am Mass) Mother’s Day observed
12	Vestry (Tuesday, 7 pm)
15	Brown Spring Semester ends (Friday)
16	Mass with Commemoration of May Departed (Saturday, 10 am)
21	Ascension Day (Thursday, Low Mass at 12:10 pm)
24	Brown Commencement Sunday

HOLY WEEK AND EASTER 2020		
April 5	Palm Sunday	8 &10 am
April 9	Maundy Thursday	7:30 pm
April 10	Good Friday	12 Noon
April 11	Great Vigil of Easter	7:30 pm
April 12	Easter Day	8 & 10 am

MAY (CONT.)

25 **Memorial Day observed**
(Monday, holiday schedule)

31 **Day of Pentecost: Whitsunday**

JUNE

1 **Feast of the Visitation, *transferred***
(Monday, Low Mass at 6 pm)

6 **Holy Rosary** (Saturday, 10:30 am)

9 **Vestry** (Tuesday, 7 pm)

14 **Solemnity of Corpus Christi**
Choir's last Sunday of season

Sunday School Recognition during
10 am Mass

Parish BBQ following 10 am Mass

20 **Requiem for June Departed**
(Saturday, 10 am)

SCHEDULE OF SERVICES

Sunday

Morning Prayer 8 am
Low Mass 8:10 am
Solemn High Mass 10 am
Evening Prayer 5:30 pm (academic term)

Monday, Wednesday

Evening Prayer 5:30 pm
Low Mass 6 pm

Tuesday, Thursday, Friday

Noonday Prayer 12 pm
Low Mass 12:10 pm

Saturdays and Federal Public Holidays

Morning Prayer 9:30 am
Low Mass 10 am

All welcome – Please join us!

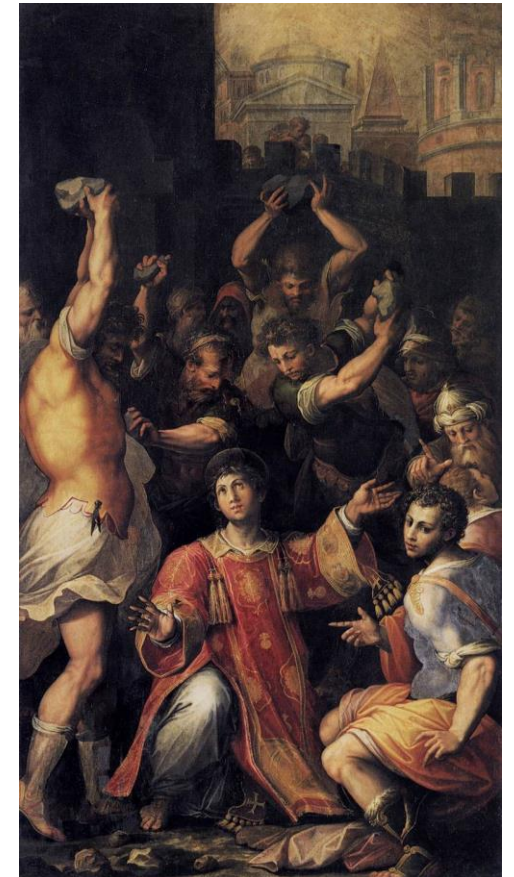


Note: all events are subject to change without notice; please call 401.421.6702 or email office@sstephens.necoxmail.com for up-to-date information on specific events; or visit the parish website at www.sstephens.org

For more detailed information on musical offerings please see the 2019-2020 Liturgical Music Brochure

Saint Stephen's Church
114 George Street
Providence RI 02906-1189

PARISH CALENDAR 2019 – 2020



*Martyrdom of St. Stephen (c. 1560)
by Giorgio Vasari (1511-1574). Oil on canvas.
Vatican Museum Collection.*

S. STEPHEN'S CHURCH IN PROVIDENCE

*An Anglo-Catholic Parish
in the Episcopal Diocese of Rhode Island
in the worldwide Anglican Communion*